

BUKTI KORESPONDENSI PROSIDING

Judul :

**Applying Data Mining to Analysis of Mismatch
Between Education and Labor Market in
Indonesia”**

- 1. Artikel diterima (16 September 2019)**
- 2. LoA (21 Oktober 2019)
Invitation Letter Invitation as Presenter for
2nd InCEAS(7 November 2019)**
- 3. Sertifikat Presentasi (16 November 2019)**
- 4. Artikel review (14 Desember 2019)
- Revisi artikel include di email**
- 5. Artikel yang di publish pada prosiding**

1. **Artikel diterima (16 September 2019)**



Meilany Nonsi Tentua <meilany@upy.ac.id>

[InCEAS 2019] Information about paper #ID: 15

1 message

Inceas UMP <inceas@ump.ac.id>

Mon, Sep 16, 2019 at 12:15 PM

To: "meilany@upy.ac.id" <meilany@upy.ac.id>

Dear Meilany Nonsi Tentua,

On behalf of the InCEAS 2019 Universitas Muhammadiyah Purwokerto Call for Paper Committee, we have the pleasure to inform you that your paper titled "**Applying Data Mining to Analysis of Mismatch Between Education and Labor Market in Indonesia**" **has been ACCEPTED to be part of the InCEAS 2019 Conference.**

The 2nd InCEAS will be held during 16 November, 2019, Hotel Santika Premiere Jogja, Jalan Jend. Sudirman No.19, Cokrodiningratan, Jetis, Kota Yogyakarta, Daerah Istimewa Yogyakarta, Indonesia. Please note that it is essential for all participants to send the **Registration Form** through the registration link (<http://inceas.ump.ac.id/index.php/inceas/pages/view/payment>) along with **proof of receipt of payment.**

See you in Yogyakarta, Indonesia.

Best Regards,

Wakhyu Dwiono
Chair of InCEAS 2019

2. LoA (21 Oktober 2019)



Meilany Nonsi Tentua <meilany@upy.ac.id>

[InCEAS 2019] Letter of Acceptance (LoA) #15

3 messages

Inceas UMP <inceas@ump.ac.id>

Mon, Oct 21, 2019 at 12:06 PM

To: "meilany@upy.ac.id" <meilany@upy.ac.id>

Dear Meilany Nonsi Tentua, Edi Winarko,

It is our great pleasure to inform you that your paper entitled "APPLYING DATA MINING TO ANALYSIS OF MISMATCH BETWEEN EDUCATION AND LABOR MARKET IN INDONESIA" has been ACCEPTED to be part of the InCEAS 2019 Conference.

Please, find attached the **LoA file**.

Best Regards,

Wakhyu Dwiono

Chair of InCEAS 2019

 **LoA - 15 - Meilany Nonsi Tentua, Edi Winarko.pdf**

634K

Meilany Nonsi Tentua <meilany@upy.ac.id>

Wed, Oct 23, 2019 at 10:14 AM

To: Inceas UMP <inceas@ump.ac.id>

I accept the invitation.

On Mon, Oct 21, 2019 at 12:06 PM Inceas UMP <inceas@ump.ac.id> wrote:

Dear Meilany Nonsi Tentua, Edi Winarko,

It is our great pleasure to inform you that your paper entitled "APPLYING DATA MINING TO ANALYSIS OF MISMATCH BETWEEN EDUCATION AND LABOR MARKET IN INDONESIA" has been ACCEPTED to be part of the InCEAS 2019 Conference.

Please, find attached the **LoA file**.

Best Regards,

Wakhyu Dwiono

Chair of InCEAS 2019

Inceas UMP <inceas@ump.ac.id>

Fri, Oct 25, 2019 at 4:59 PM

To: Meilany Nonsi Tentua <meilany@upy.ac.id>

Dari: Meilany Nonsi Tentua <meilany@upy.ac.id>**Dikirim:** Rabu, 23 Oktober 2019 11.14**Kepada:** Inceas UMP <inceas@ump.ac.id>**Subjek:** Re: [InCEAS 2019] Letter of Acceptance (LoA) #15

I accept the invitation.

On Mon, Oct 21, 2019 at 12:06 PM Inceas UMP <inceas@ump.ac.id> wrote:

Dear Meilany Nonsi Tentua, Edi Winarko,


It is our great pleasure to inform you that your paper entitled "APPLYING DATA MINING TO ANALYSIS OF MISMATCH BETWEEN EDUCATION AND LABOR MARKET IN INDONESIA" has been ACCEPTED to be part of the InCEAS 2019 Conference.

Please, find attached the **LoA file**.

Best Regards,

Wakhyu Dwiono

Chair of InCEAS 2019

 **LoA - 15 - Meilany Nonsi Tentua, Edi Winarko.pdf**
634K

September 16, 2019

Letter of Acceptance

Dear Meilany Nonsi Tentua, Edi Winarko

Paper ID: 15

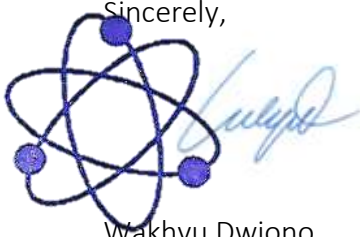
On behalf of the InCEAS 2019 Universitas Muhammadiyah Purwokerto Call for Paper Committee, we have the pleasure to inform you that your paper titled **"APPLYING DATA MINING TO ANALYSIS OF MISMATCH BETWEEN EDUCATION AND LABOR MARKET IN INDONESIA"** has been **ACCEPTED** for oral presentation.

We would like your cooperation with the double-check of your camera ready/final paper:

1. Ensuring the paper conform to the standard of the **IOP manuscript template** for conference proceedings. Please download the IOP manuscript template for conference proceedings, <https://publishingsupport.iopscience.iop.org/author-guidelines-for-conference-proceedings/>
2. Please take notice that the **camera-ready or final** paper should be **submitted by October 27, 2019**, to InCEAS 2019 system in part "Review -> Editor Decision -> Upload Author Version" section or by email inceas@ump.ac.id.
3. Most importantly, please ensure the similarity score is **less than 30%**.
4. Please note that it is essential for all presenter to send the **Registration Form** through the registration link <http://inceas.ump.ac.id/index.php/inceas/pages/view/payment> along with **proof of receipt of payment** and should be **submitted by October 25, 2019**.

See you in Yogyakarta, Indonesia.

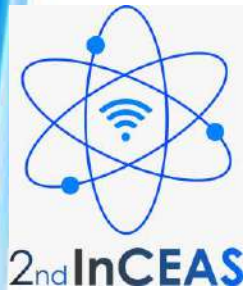
Sincerely,



Wakhyu Dwiono

Chair of InCEAS 2019

3. Invitation Letter Invitation as Presenter for 2nd InCEAS(7 November 2019)



**2nd INTERNATIONAL CONFERENCE ON
ENGINEERING
AND APPLIED SCIENCES 2019**
UNIVERSITY OF MUHAMMADIYAH PURWOKERTO
FACULTY OF ENGINEERING AND SCIENCES

Number : **04.003/InCEAS/FT-UMP/XI/2019**
Subject : **Invitation as Presenter for 2nd InCEAS**

10 Rabi'ul Awal 1441 H
7 November 2019

To :
Meilany Nonsi Tentua, Edi Winarko (Paper ID: 15)
UPGRIY

INVITATION LETTER

Dear Author,

On behalf of the 2nd International Conference On Engineering and Applied Sciences 2019 (2nd InCEAS 2019) organizing committee, we are delighted to invite you to come **as presenter** to present your paper at parallel session which will be held on :

Date : November 16th, 2019
Time : <http://inceas.ump.ac.id/index.php/inceas/pages/view/rundown>
Venue : Santika Premiere Hotel, Yogyakarta, Indonesia

As presenter, please **upload your file presentation** at bit.ly/presentationInCEAS2019 **before November 13th, 2019** and please take notice that after presentation at the conference there will be a revision before the paper is ready to be published.

Finally, we would like to take this opportunity to thank for your participation in the 2nd InCEAS 2019. We look forward to see you in Yogyakarta, Indonesia, in November 2019.

Sincerely,

Wakhyu Dwiono, S.T., M.T.
Chair of InCEAS 2019

FACULTY OF ENGINEERING AND SCIENCES
UNIVERSITAS MUHAMMADIYAH PURWOKERTO
Jl. Raya Dukuwaluh PO BOX 202 PURWOKERTO 53182
Phone : 0281-636751, 630463 Fax : 0281-637239
Website : <http://inceas.ump.ac.id>
Email : inceas@ump.ac.id

-

4. Sertifikat Presentasi (16 November 2019)



CERTIFICATE

No. 064/InCEAS/XI/2019

This is to express our sincere appreciation and gratitude to

Meilany Nonsi Tentua, Edi Winarko

as **Presenter**

in

InCEAS

**International Conference on
Engineering and Applied Science 2019:
Smart Technology, Challenges and Opportunity in
Industries 4.0**

Held by **Faculty of Engineering and Science**
Universitas Muhammadiyah Purwokerto

in Santika Premiere Hotel
Yogyakarta, Indonesia 16th November 2019

Yogyakarta, 16th November 2019



M. Nurrahman Fauziq Tamam, M.T.
Department of Engineering and Science
Universitas Muhammadiyah Purwokerto



Wahyu Dwiono, M.T.
Chairperson of
InCEAS 2019

5. Artikel review (14 Desember 2019)
- Revisi artikel include di email



Meilany Nonsi Tentua <meilany@upy.ac.id>

[InCEAS 2019] Editor Decision #Paper ID: 15

2 messages

Inceas UMP <inceas@ump.ac.id>
To: Meilany Nonsi Tentua <meilany@upy.ac.id>

Sat, Dec 14, 2019 at 4:52 PM

Dear **Meilany Nonsi Tentua, Edi Winarko**

We have reached a decision regarding your submission to The 2nd International Conference on Engineering and Applied Sciences 2019 (2nd InCEAS 2019) “

APPLYING DATA MINING TO ANALYSIS OF MISMATCH BETWEEN EDUCATION AND LABOR MARKET IN INDONESIA”.

Our decision is to: **Revisions required**

In preparing your revised paper, you should pay attention to:

1. To consider the **reviewer's comments** to prepare your final version paper. Attention to **review form**. Please, find attached **the Review form file**.
2. Prepare your **figures** in high quality and created by yourself (not copy and paste from other parties). All legends, captions ... in your figures **MUST** in English.
3. Please ensure that:
 1. All tables and figures have been declared in your text;
 2. All references have been cited in your text;
 3. Each citation should be written in the order of appearance in the text;
 4. The references must be presented in numbering.
4. Please prepare your revised paper perfectly consider the IOP guide. Please get take a look at <https://publishingsupport.iopscience.iop.org/author-guidelines-for-conference-proceedings/>

You should submit your revised paper through our InCEAS email within **one week (7 days)**.

Thank you

Best Regards,
Wakhyu Dwino

 **15 - Review Form.docx**
31K

Meilany Nonsi Tentua <meilany@upy.ac.id>
To: Inceas UMP <inceas@ump.ac.id>

Sat, Dec 21, 2019 at 6:39 PM

[Quoted text hidden]

 **applying data mining to analys mismatch edit.docx**
199K

Review Form of InCEAS 2019

1. Abstract + Keywords

Are all required components included in the abstract? Are the keywords appropriately chosen?

Good

2. Goal

Is the goal explicitly stated in the Introduction? Is its formulation clear and unambiguous?

Good

3. Tools And Methods

Are methods the author uses adequate and well used?

Weak

4. Discussion And Conclusion

Is it related to the results presented before? Do you consider them as coherent?

Good

5. Literature

Does the author utilize relevant literature?

Good

6. Author'S Knowledge

What is the level of author's knowledge? Does he/she utilize all recent contributions relevant to the topic?

Good

7. Figures And Tables

Does the author use them suitably? Are legend and notations clear?

Good

8. Writing Style

Is it clear and understandable?

Good

9. Peer reviewer's comment(s) (overall)

In general, the script is good but the writing systematic needs to be adjusted to the IMRAD model (Introduction, Method, Result and Discussion, Conclusion, Acknowledgment (optional), References). The method must be presented explicitly as one part of the writing that contains the stages of the research carried out including data collection and analysis.

In addition, there are several words that still need to be corrected.

9. Recommendation

Suitable for publishing after corrections

6. Artikel yang di publish pada prosiding

Table of contents

Volume 771

2020

◀ Previous issue Next issue ▶

2nd International Conference on Engineering and Applied Sciences (2nd InCEAS) 16 November 2019, Yogyakarta, Indonesia

Accepted papers received: 04 February 2020

Published online: 18 March 2020

Open all abstracts

Preface

OPEN ACCESS 011001

Preface

+ Open abstract  View article  PDF

OPEN ACCESS 011002

Editorial Team

+ Open abstract  View article  PDF

OPEN ACCESS 011003

Conference photographs

+ Open abstract  View article  PDF

OPEN ACCESS 011004

Peer review statement

+ Open abstract  View article  PDF

Electrical Engineering

OPEN ACCESS 012001

Sound Recognition of Four Stroke Manual Transmission Motorcycle Engine's Damage

H Santoso

This site uses cookies. By continuing to use this site you agree to our use of cookies. To find out more, see

+ Open abstract  View article  PDF



OPEN ACCESS 012002

Design a Prototype of The Application System of Classification and Calculating Motor Vehicles on Highway

M T Tamam, W Dwiono and R J P Safian

[+ Open abstract](#) [View article](#) [PDF](#)

OPEN ACCESS 012003

Design, Construction and Testing of Portable Systems for Temperature, Humidity and Ammonia Monitoring of Chicken Coop

H Supriyono, U Bimantoro and K Harismah

[+ Open abstract](#) [View article](#) [PDF](#)

OPEN ACCESS 012004

Automatic Gate System Based on Water Flow Within the Intake of a Micro-Hydro Power Plant

P Pangaribuan, B S Aprillia and A S Wibowo

[+ Open abstract](#) [View article](#) [PDF](#)

OPEN ACCESS 012005

Design and Implementation of Battery Management System for Portable Solar Panel with Coulomb Counting Method

A R Afif, B S Aprillia and W Priharti

[+ Open abstract](#) [View article](#) [PDF](#)

OPEN ACCESS 012006

Design of Automatic Switch System of Residential Load From Solar Cell and Power Plant Resources using Neural Network

D K Silalahi, B S Aprilia, W Priharti, K Kumillayly and S Saidah

[+ Open abstract](#) [View article](#) [PDF](#)

OPEN ACCESS 012007

DC Power Supply using Digital Potentiometer on Switching Regulator Module Monitored and Controlled via NI LabView

F Nugraha, R A Priramadhi and M Ramdhani

[+ Open abstract](#) [View article](#) [PDF](#)

OPEN ACCESS 012008

Design of Automatic Switch System of Solar Panel and Power Plant for Residential Load using Artificial Neural Network

D Rahmawati, B S Aprilia, W Priharti, D K Silalahi and K Kumillayly

This site uses cookies. By continuing to use this site you agree to our use of cookies. To find out more, see our Privacy and Cookies policy.



[+ Open abstract](#) [View article](#) [PDF](#)

OPEN ACCESS

012009

LoRa Gateway as Internet of Things (IoT) Infrastructure Components on Undip Vocational School

D Y Tadeus, Yuniarto and F Mangkusamito

[+ Open abstract](#) [View article](#) [PDF](#)

OPEN ACCESS

012010

Solar Cell Output Optimization using Light Convergence Method

Bandiyah Sri Aprillia, Cahyantari Ekaputri and Muhammad Rafiqy Zul Fahmi

[+ Open abstract](#) [View article](#) [PDF](#)

OPEN ACCESS

012011

Design On-Grid Solar Power System for 450 VA Conventional Housing using HOMER Software

Bandiyah Sri Aprillia and Muhammad Agung Foury Rigoursyah

[+ Open abstract](#) [View article](#) [PDF](#)

OPEN ACCESS

012012

IoT Based Logistics Vehicle Security Monitoring System

W Priharti, S Sumaryo, T Saraswati and M R Nurfadilah

[+ Open abstract](#) [View article](#) [PDF](#)

OPEN ACCESS

012013

Root-Mean Adjustment Threshold for the Improvement of Anomaly Detection Algorithm in Hyperspectral Images

M Zaini and M Rizkinia

[+ Open abstract](#) [View article](#) [PDF](#)

OPEN ACCESS

012014

Coil Inductance Design for Low Power Hybrid Wireless Power Transfer

T A Kurniawan, R B Gumilang and G Wibisono

[+ Open abstract](#) [View article](#) [PDF](#)

OPEN ACCESS

012015

Analysis of Arduino Uno Application on Control System Based on Industrial Scale

A H Taufiq, L H Kurniawan and T A Y Nugraha

[+ Open abstract](#) [View article](#) [PDF](#)

This site uses cookies. By continuing to use this site you agree to our use of cookies. To find out more, see our Privacy and Cookies policy



OPEN ACCESS 012016
Simulation and Analysis of ANFIS (Adaptive Neuro-Fuzzy Inference System) for Music Genre
A H Pratama, W Dwiono and M T Tamam
[+ Open abstract](#) [View article](#) [PDF](#)

OPEN ACCESS 012017
Feature Selection Using Rough Set Theory Algorithm for Breast Cancer Diagnosis
D N K Hardani and H A Nugroho
[+ Open abstract](#) [View article](#) [PDF](#)

Informatics

OPEN ACCESS 012018
Multilevel Thresholding Image Segmentation based on Autonomous Groups Particle Swarm Optimization
Murinto
[+ Open abstract](#) [View article](#) [PDF](#)

OPEN ACCESS 012019
Sudomy: Information Gathering Tools for Subdomain Enumeration and Analysis
Rizdqi Akbar Ramadhan, Redho Maland Aresta and Dedy Hariyadi
[+ Open abstract](#) [View article](#) [PDF](#)

OPEN ACCESS 012020
Applying Data Mining to Analysis of Mismatch Between Education and Labor Market in Indonesia
Meilany Nonsi Tentua and Edi Winarko
[+ Open abstract](#) [View article](#) [PDF](#)

OPEN ACCESS 012021
Detection of Object Changes in Low Contrast Image Using Template Matching Method
I K Amri and Murinto
[+ Open abstract](#) [View article](#) [PDF](#)

OPEN ACCESS 012022
Dragon Fruit Maturity Detection Based-HSV Space Color Using Naive Bayes Classifier Method
S. Khisandina and Murinto

This site uses cookies. By continuing to use this site you agree to our use of cookies. To find out more, see our [Privacy and Cookies policy](#).



[+ Open abstract](#) [View article](#) [PDF](#)

OPEN ACCESS

012023

Eliciting Requirements of Order Fulfilment in A Company

Johanes Fernandes Andry, Hendy Tannady and Filscha Nurprihatin

[+ Open abstract](#) [View article](#) [PDF](#)

OPEN ACCESS

012024

Logical Acquisition in the Forensic Investigation Process of Android Smartphones based on Agent using Open Source Software

Mukhlis Prasetyo Aji, Dedy Hariyadi and Tri Rochmadi

[+ Open abstract](#) [View article](#) [PDF](#)

OPEN ACCESS

012025

Rice Productivity Analysis by Province Using K-Means Cluster Algorithm

A Supriyatna, I Carolina, W Widiati and C Nuraeni

[+ Open abstract](#) [View article](#) [PDF](#)

OPEN ACCESS

012026

The Stemming Application on Affixed Javanese Words by using Nazief and Adriani Algorithm

Dewi Soyusiawaty, Anna Hendri Soleliza Jones and Nora Lestari Lestariw

[+ Open abstract](#) [View article](#) [PDF](#)

OPEN ACCESS

012027

Diet Calorie Determination System using Case-Based Reasoning

Hindayati Mustafidah, Aprilia Olivia Yosi, Ardhista Shabrina Fitri, Vita Nurul Arfiana Fatimah and Yolla Arinda Nur Fitriana

[+ Open abstract](#) [View article](#) [PDF](#)

OPEN ACCESS

012028

Stress Detection from Multimodal Wearable Sensor Data

Fitri Indra Indikawati and Sri Winiarti

[+ Open abstract](#) [View article](#) [PDF](#)

OPEN ACCESS

012029

Classification of Farmer's Eligibility as Recipients of Subsidized Fertilizer Assistance with C4.5 Algorithm

This site uses cookies. By continuing to use this site you agree to our use of cookies. To find out more, see

[our Privacy and Cookies policies](#)



[+ Open abstract](#) [View article](#) [PDF](#)

OPEN ACCESS 012030

Detection of Mad Lazim Harfi Musyba Images Uses Convolutional Neural Network

A Noeman and D Handayani

[+ Open abstract](#) [View article](#) [PDF](#)

OPEN ACCESS 012031

Convolutional Neural Network for Brain Tumor Detection

D C Febrianto, I Soesanti and H A Nugroho

[+ Open abstract](#) [View article](#) [PDF](#)

OPEN ACCESS 012032

QOS Analysis of Routing Protocol Babel on Mobile Ad-Hoc Network (MANET)

A Wijayanto and R Adhitama

[+ Open abstract](#) [View article](#) [PDF](#)

OPEN ACCESS 012033

Hanoman adventure game based on Android

Sigit Sugiyanto, Achmad Fauzan, Lahan Adi Purwanto and Dimara Kusuma Hakim

[+ Open abstract](#) [View article](#) [PDF](#)

OPEN ACCESS 012034

Design of Pond Water Quality Monitoring System Based on Internet of Things and Pond Fish Market in Real-Time to Support the Industrial Revolution 4.0

A Junaidi and C Kartiko

[+ Open abstract](#) [View article](#) [PDF](#)

OPEN ACCESS 012035

Build Design of Information Media Application in Purwokerto Based on Multimedia

Tito Pinandita and Silvia Deviani Saputri

[+ Open abstract](#) [View article](#) [PDF](#)

OPEN ACCESS 012036

Case-Based Reasoning for Mortality Prediction of Catfish Farming Based on Water Quality

Suwarsito, H Mustafidah, S Mujiono and M A Fitriani

[+ Open abstract](#) [View article](#) [PDF](#)

This site uses cookies. By continuing to use this site you agree to our use of cookies. To find out more, see our Privacy and Cookies policy.



Chemical Engineering

OPEN ACCESS

012037

Preservation potential of lemon basil essential oil on tofu: Development of a natural food preservative

A Hamad, M B Ramadhan, D Y S Dewi, A D Djalil and D Hartanti

[+ Open abstract](#) [View article](#) [PDF](#)

OPEN ACCESS

012038

The Effect of Olive Oil Composition on The Staining Quality of Klowong Batik Wax

Dulmalik, Z A Chafid, H Setiadi and F N Khaliq

[+ Open abstract](#) [View article](#) [PDF](#)

OPEN ACCESS

012039

Mass Transfer Coefficient Study of Shogaol Extraction in Ginger Using Subcritical Water

M E Yulianto, R Amalia, V Paramita, I Hartati and Q A K Nisa'

[+ Open abstract](#) [View article](#) [PDF](#)

OPEN ACCESS

012040

Preliminary Study of Gaultherin Extraction from Gandapura Through Uv-Photo Extraction

Sutrisno, D Ariwibowo, M E Yulianto and N A Maulinda

[+ Open abstract](#) [View article](#) [PDF](#)

OPEN ACCESS

012041

The Development of Hydrogel Polymer from Diapers Waste with The addition of Straw Nano Fibers as The Growing Media of Green Beans Plant

C L Imalia, G A Selviana, A Chafidz and Haryanto

[+ Open abstract](#) [View article](#) [PDF](#)

OPEN ACCESS

012042

Ultrafiltration of Laundry Wastewater Using Natural Zeolite-PVA Hybrid Membrane

A Ma'ruf, M A S Al Fathoni, A M Purnawanto and I Astiyani

[+ Open abstract](#) [View article](#) [PDF](#)

OPEN ACCESS

012043

Characterization and ultrasound-assisted activation of Indonesian natural zeolite from Cikalong West Java Province

Regawa Bayu Pamungkas, Mohamad Djaeni, Bakti Jos and Wancuh

This site uses cookies. By continuing to use this site you agree to our use of cookies. To find out more, see

[+ Open abstract](#) [View article](#) [PDF](#)



Civil Engineering

-
- OPEN ACCESS** 012044
Analysis of Flood Discharges of Serayu River at Serayu Barrage using HSS Gama I and Nakayasu Models
Teguh Marhendi and Fathurohman
[+ Open abstract](#) [View article](#) [PDF](#)
-
- OPEN ACCESS** 012045
The Assessment of BRT Trans Semarang Service Quality
Amalia Nur Adibah and Okto Risdianto Manullang
[+ Open abstract](#) [View article](#) [PDF](#)
-
- OPEN ACCESS** 012046
Landslide Analysis Study and Cisewu Countermeasures in District, Garut Regency, West Java
A Salimah, M Ammar, D Rahmawati, Yelvi and S Tri Widya
[+ Open abstract](#) [View article](#) [PDF](#)
-
- OPEN ACCESS** 012047
Effect of change of channel width in the downstream of the check dam on controlling sedimentation in Mrica Reservoir
D Ulfiana, D A Wulandari, P N Parmantoro and Susilowati
[+ Open abstract](#) [View article](#) [PDF](#)
-
- OPEN ACCESS** 012048
Effect of Combination of Steel Fibre and Silica Fume on the Mechanical Strength of Concrete
M Sofyan, B Wicaksono and A O Irlan
[+ Open abstract](#) [View article](#) [PDF](#)
-
- OPEN ACCESS** 012049
Community Perception of The Use of Shelter as Tsunami Mitigation In The Coastal Areas of Padang City
Y Hesna, J Sunaryati, A Suandi and Supani
[+ Open abstract](#) [View article](#) [PDF](#)
-
- OPEN ACCESS** 012050
Sediment Trap in the Downstream of Check Dam at The Effect of Changes in Channel Depth
[+ Open abstract](#) [View article](#) [PDF](#)
-

D A Wulandari, Susilowati, D Ulfiana and P N Parmantoro

[+](#) Open abstract [View article](#) [PDF](#)

OPEN ACCESS

012051

Setting Time of the Geopolymer Binder with White Soil Substitution

Y A Priastiwi, Muhrozi, R Y Adi, D Daryanto and Z Salamsyah

[+](#) Open abstract [View article](#) [PDF](#)

OPEN ACCESS

012052

The planning of campus bus in Islamic University of Indonesia with geographic system information

P J Romadhona and A I Hapsari

[+](#) Open abstract [View article](#) [PDF](#)

OPEN ACCESS

012053

Shear Strength of Reinforced Concrete Beams Strengthened with Near Surface Mounted Steel Plates

R Thamrin, S Haris and Zaidir

[+](#) Open abstract [View article](#) [PDF](#)

OPEN ACCESS

012054

Landslide Vulnerability Mapping for Landslide Victim Relocation

R Hidayat

[+](#) Open abstract [View article](#) [PDF](#)

OPEN ACCESS

012055

Effective Performance Evaluation to Estimate Cost and Time Using Earned Value

F Susilowati and W M Kurniaji

[+](#) Open abstract [View article](#) [PDF](#)

OPEN ACCESS

012056

Macroscopic Flow Models of State Highway Midblocks under Mixed Traffic Flow Conditions: Ramon Magsaysay Boulevard Case Study

M S Delos Santos, A R Alzona, M A Taguba and C M Vahdanipour

[+](#) Open abstract [View article](#) [PDF](#)

OPEN ACCESS

012057

Fresh and Hardened Properties of Self-Consolidating Concrete (SCC) Incorporated with Zeolite and Fly Ash



Besty Afriandini, Fanny Monika, Fadillawaty Saleh, Hakas Prayuda, Martyana Dwi Cahyati and Siti Isnaini Kurniawati Djaha

[+](#) [Open abstract](#) [View article](#) [PDF](#)

OPEN ACCESS

012058

Analysis of concrete mixtures with marble waste material as cement substitution and glass waste as sand substitution on concrete compressive strength

F Zulkarnain, J Hadipramana and Krisnianda

[+](#) [Open abstract](#) [View article](#) [PDF](#)

OPEN ACCESS

012059

Optimization of the compressive strength of hair fiber reinforced concrete using central composite design

F D Santos, M A M Taguba, A R Alzona, R C S Basada, J M A Elbit, G L Nones, K P M Orido and E U G Ramos

[+](#) [Open abstract](#) [View article](#) [PDF](#)

OPEN ACCESS

012060

Evaluation of the implementation of the motorcycle lane based on the riding experience

T Kurniati, Purnawan, Yosritzal and E E Putri

[+](#) [Open abstract](#) [View article](#) [PDF](#)

OPEN ACCESS

012061

Fluorescent concrete with strontium phosphorus powder and plastic waste

D D Purnama, T Idwin and R Hidayawanti

[+](#) [Open abstract](#) [View article](#) [PDF](#)

OPEN ACCESS

012062

Concrete Performance with Ground Granulated Blast Furnace Slag as Supplementary Cementitious Materials

R A T Cahyani and Y Rusdianto

[+](#) [Open abstract](#) [View article](#) [PDF](#)

OPEN ACCESS

012063

Main Task and Functions Stakeholders Institutional to Improve Safety Culture in Construction Sector

R A Machfudiyanto, Y Latief, A Suraji and L Sagita

[+](#) [Open abstract](#) [View article](#) [PDF](#)

This site uses cookies. By continuing to use this site you agree to our use of cookies. To find out more, see

[our privacy and Cookies policy.](#)

012064 

The Effect of Iron Powder Waste as a Replacement of Amount of Fillers on HRS (Hot Rolled Sheet)

Sulfah Anjarwati and Panji Dwi Santosa

[+ Open abstract](#) [View article](#) [PDF](#)

Industrial Engineering

OPEN ACCESS 012065

Application of nanopowders in industrial production of mixed feed

M Chkalova, V Shahov, V Pavlidis and S Solovyov

[+ Open abstract](#) [View article](#) [PDF](#)

OPEN ACCESS 012066

Determinants factors toward the performance of the employee in the crude palm oil industry in West Sumatera, Indonesia

Hendy Tannady, Johanes Fernandes Andry and Filscha Nurprihatin

[+ Open abstract](#) [View article](#) [PDF](#)

OPEN ACCESS 012067

Social capital of local communities in the water resources management: an insight from Kepulauan Riau

W E Yudiatmaja, Yudithia, T Samnuzulsari, Suyito and Edison

[+ Open abstract](#) [View article](#) [PDF](#)

OPEN ACCESS 012068

Regional Food Hubs For Distribution of Regional Food Logistics (Case Study on the Establishment of a Food Distribution Center in Banten Province, Indonesia)

H Winarno, T Perdana, Y Handayati and D Purnomo

[+ Open abstract](#) [View article](#) [PDF](#)

Mechanical Engineering

OPEN ACCESS 012069

The effect of composition on hardness and wear resistance of rice plant fiber reinforced composite as a material of brake lining

Agung Setyo Darmawan, Pramuko Ilmu Purboputro and Bambang Waluyo Febriantoko

[+ Open abstract](#) [View article](#) [PDF](#)

OPEN ACCESS 012070

Characteristics of Vertical Mixed Flow Dryer in Coffee Bean Drying Process

This site uses cookies. By continuing to use this site you agree to our use of cookies. To find out more, see our privacy and cookies policy.



Sutrisno, D Ariwibowo, M E Yulianto and R Sitawati

[+ Open abstract](#)

[View article](#)

[PDF](#)

OPEN ACCESS

012071

Environmental effects on hardness and wear resistance of composites reinforced by rice plant fiber as a material of brake lining

Pramuko Ilmu Purboputro, Agung Setyo Darmawan and Bambang Waluyo Febriantoko

[+ Open abstract](#)

[View article](#)

[PDF](#)

JOURNAL LINKS

[Journal home](#)

[Journal scope](#)

[Information for organizers](#)

[Information for authors](#)

[Contact us](#)

[Reprint services from Curran Associates](#)

This site uses cookies. By continuing to use this site you agree to our use of cookies. To find out more, see our Privacy and Cookies policy.



physicsworld

Electrochemical Society powers ahead with open science



ECS The Electrochemical Society
Advancing solid state & electrochemical science & technology

Learn how the Electrochemical Society is working to make scientific content free for everyone

Click here to read about "Free the Science" week on **physicsworld.com**

Click to read article

This site uses cookies. By continuing to use this site you agree to our use of cookies. To find out more, see our Privacy and Cookies policy.



PAPER • OPEN ACCESS

Applying Data Mining to Analysis of Mismatch Between Education and Labor Market in Indonesia

To cite this article: Meilany Nonsi Tentua and Edi Winarko 2020 *IOP Conf. Ser.: Mater. Sci. Eng.* **771** 012020

View the [article online](#) for updates and enhancements.

You may also like

- [The Development of Indonesian Labour Market Information System \(LMIS\) for Vocational Schools and Industries](#)
M T Parinsi, V R Palilingan, Sukardi et al.
- [Russian Labour Market Outlook](#)
E V Kashtanova, R A Ashurbekov and I A Maslennikov
- [Employment in rural Russia](#)
L Bondarenko and L Tatarova

A promotional banner for 'Free the Science Week 2023' featuring a dark blue background with a futuristic, glowing interface. A hand is shown interacting with a central circular element containing a padlock icon. The text 'Free the Science Week 2023' is in light blue, and 'Accelerating discovery through open access!' is in white. The ECS logo and website URL are in the bottom left, and a 'Discover more!' button is in the bottom center.

Free the Science Week 2023 April 2-9

Accelerating discovery through
open access!

 www.ecsdl.org [Discover more!](#)

Applying Data Mining to Analysis of Mismatch Between Education and Labor Market in Indonesia

Meilany Nonsi Tentua^{*1,2}, Edi Winarko²

¹Teknik Informatika, Fakultas Teknik, Universitas PGRI Yogyakarta, Indonesia

²Department of Computer Science and Electronics, FMIPA UGM, Yogyakarta, Indonesia

*meilany@upy.ac.id, ²ewinarko@ugm.ac.id

Abstract. One of the labor problems in Indonesia is the occurrence of mismatch (incompatibility between education and job). The incompatibility of education and job (labor market) can be categorized into several criteria such as vertical mismatch, horizontal mismatch, overqualification, under qualification, over skilling, under skilling, credentialism and economic skills. In several countries, analysis of mismatch between education and labor market can be used with several methods such as the Maximum Likelihood equation, the Mincer-type income equation, and the use of clustering algorithms in data mining. Indonesia can adopt a method of measuring the mismatch between education and labor market which suitable with the condition in Indonesia. The use of the K-Means algorithm or the hierarchical clustering algorithm will be able to see how much mismatch is occurring in Indonesia. Clustering is carried out referring to the Republic of Indonesia's Presidential Regulation No. 8/2012 and the Indonesian Classification of Work (KBJJ).

1. Introduction

One of the labor problems in Indonesia is the occurrence of mismatch (incompatibility between education and job). The incompatibility of education and job (labor market) can be categorized into several criteria such as [1], vertical mismatch, horizontal mismatch, overqualification, under qualification, over skilling, under skilling, credentialism and economic skills.

This mismatch phenomenon is due to the transformation of the labor market in Indonesia. The first transformation occurred in the early 1990s which was marked by changes in the primary sector to the secondary sector in the labor market [2]. This condition is in line with the economic transformation from the agricultural sector to the industrial sector. There has been a decline in demand for labor from the agricultural sector and shifting to the industrial sector [3]. The second transformation occurred in the early 2000s. The rapid development of information technology and science has increased the absorption of labor in the service sector. Figure 1 shows a decrease in the demand for labor from the agricultural sector to the industrial sector in Indonesia from 2009 to 2016 [4].



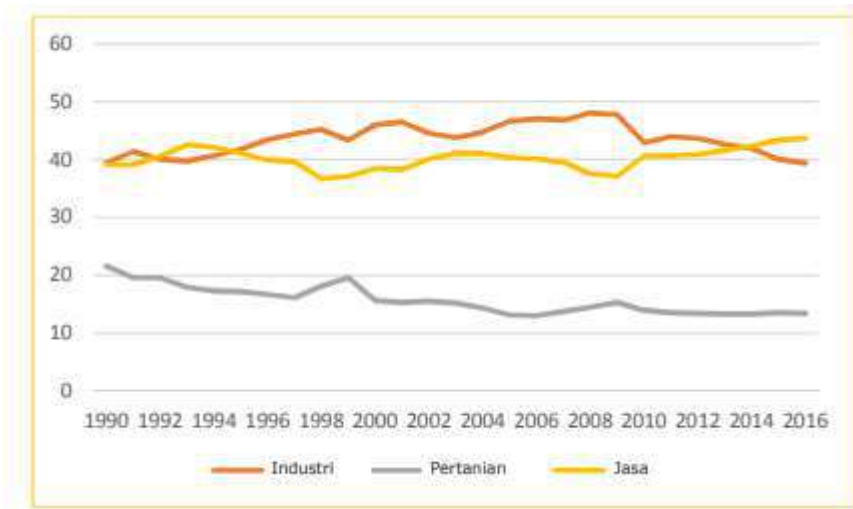
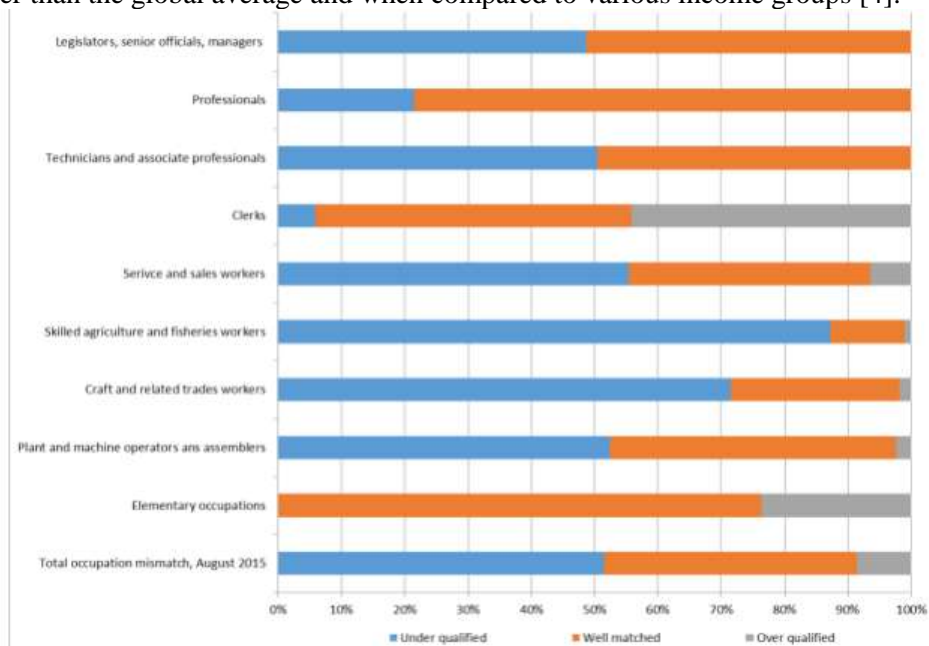


Figure 1. Workforce requirements per sector year in 1990-2016

On the supply side of labor market, there has been a large change with the growth of population and an increase in the level of education. Increasing the level of education in the workforce is an impact of the increasing access to education for the people of Indonesia. There is a gap between the highest level of education completed by staff with educational qualifications for certain types of work in the labor market. This is what causes overeducation and undereducation in the labor market. The phenomenon of overeducation and undereducation shows the existence of labor market imbalances in terms of supply and demand. In terms of the long term, this is a dilemma because it will lead to open unemployment, income problems, labor regulations, and education policies.

Statistical data shows that the labor force in Indonesia based on the ILO survey in 2018 was 125 million people or around 64.2% [5]. According to the 2015 national labor force survey processed by the University of Indonesia Demographic Institute, vertical mismatch or work mismatches with education and wages reached 53.33 percent. Meanwhile, horizontal mismatch or job qualification mismatch with educational background reaches 60.52 percent [6]. The youth unemployment rate in Indonesia is also much higher than the global average and when compared to various income groups [4].



Source: BPS (2015) Labor force situation: August 2015, Badan Pusat Statistik, Jakarta. * ADB staff calculations based on revised population estimates. ** Excludes armed forces occupations.

Figure 2. Mismatch Between Education and Labor Market in Indonesia

The mismatch between the education system and labor market needs is a very serious problem for economic growth and development. The difference between supply and demand for labor ultimately results in a decrease in the relevance of labor and inadequate use of the most important manufacturing factors. Figure 2 seen that mismatch between education and labor market in Indonesia in 2015 [7].

Several approaches have been used to analyse the mismatch of education and job [8]. Some of the causes of job mismatches with education level are inadequate skills of job seekers. "Functional" skills that must be completed in the education and training system can be divided into three main categories: [9]

- a) Self-assessment (direct approach) is an approach based on direct interviews with workers about the education needed for the current job position.
- b) Job analysis (normative approach) is the use of a measurement of the relationship between work and education needed based on job analysis evaluation.
- c) Realized match (statistical approach) by measuring the amount of education available to the job offered.

Some developed countries have made a discrepancy between the education system and the job that is very much considered by making a calculation model. This hospitality model will measure the level of discrepancy between education and employment. Several approaches are used in measuring to analysis mismatches between education and job.

In this article, we will review several models of measuring that have been carried out in several countries. Based on the review, a model that uses a data mining algorithm will be proposed to analyze the existing mismatch in Indonesia.

2. Literatur Review

Mismatch occurs when the level of education someone has is not suitable for the job. Vertical incompatibility can occur in two ways, excessive education or undereducation. Excess education is when someone is recruited for a job that requires a lower level of education than that of the individual. On the other hand, low education is where individuals have lower levels of education than expected for the job. The logical result of vertical mismatch is the presence of too many educated workers who bring skills to their jobs beyond the skills needed for the job, or the skills of less-educated workers are lower than those needed for that particular job [10]. Figure 2 shows the relationship between discrepancies that exist in education and labor market [11].

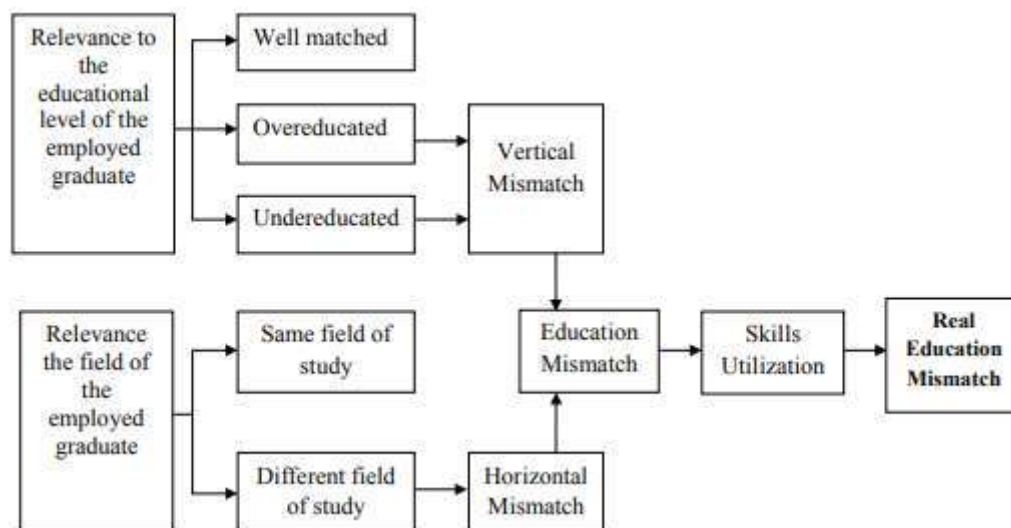


Figure 3. Relationship of mismatch that exist in Education and Job

- a. Vertical mismatch
A situation in which the level of education or skill is less or more than the required level of education or skill [12] [13]. There are several labor measurements for vertical mismatches such as subjective methods, empirical methods, job evaluation methods [14].
- b. Horizontal mismatch
A situation in which the level of education or skill matches job requirements, but the type of education or skill is inappropriate for the current job [15].
- c. Overqualification
A situation in which an individual has a higher qualification than the current job requires [16] [17] [18] [19].
- d. Underqualification
A situation in which an individual has a lower qualification than the current job requires [20] [21] [22].
- e. Overskilling
A situation in which an individual is not able to fully utilise his or her skill and abilities in the current job [23] [24].
- f. Underskilling
A situation in which an individual lacks the skill and abilities necessary to perform on the current job to acceptable standards [25] [26].
- g. Credentialism
A situation in which the level of education required to obtain the job exceeds the level of education required to perform the job adequately. It relies upon a belief of the employer that the possession of certificates and diploma implies higher productivity on the part of the individual [27] [28].
- h. Economic skill obsolescence
A situation in which skills previously utilised in a job is no longer required or have diminished in importance [22].

Several calculation models are conducted to see the amount of discrepancy between education and job in several countries. The results of this calculation are usually used to consider existing education policies. In Spain, especially in Barcelona, the calculation of inconsistencies between education and work is done by considering the availability of private transport to represent potential determinants. The equation model uses the Limited Information Maximum Likelihood equation, namely:[29]

$$\text{mismatch}_i = \alpha + \beta' X_i + \gamma \cdot \text{pta}_i + \delta \cdot \text{nca}_i + \varepsilon_i \quad (1)$$

Equation (1) associates job-education mismatch with control variable vector (X_i) and with work accessibility with public transportation (PTA) and with private transportation (NCA). In the Netherlands, the calculation of nonconformity is done using the formulation of human capital H_{ct} available for company c in year t on the entrepreneur's perception of the mct match between skill demand and supply of skills in the company. The equation is written as:

$$m_{ct} = \alpha_0 + \alpha_1 H_{ct} + \alpha_2 X_{ct} + \eta_r + \eta_s + \varepsilon_{ct} \quad (2)$$

where m_{ct} is equal to 1 if company $c \in \{1, 2, \dots, N\}$ reports mismatch in year t , and 0 otherwise; X_{ct} constitutes a vector of company characteristics; η_r and η_s represent, respectively, region and sector fixed effects and ε_{ct} is the error term. [30]

More than a quarter of Australian graduates were found to be unsuitable. Graduates from fields of study and work were found. Mismatches are analyzed by looking at the income earned. The Ordinary Least Squares regression model is used in this calculation, which can be stated as:

$$\ln(\text{sal}) = X\beta + M + \varepsilon \quad (3)$$

where $\ln(\text{sal})$ denotes annual salary, expressed in natural logarithmic format. The vector M are dummy variables that represent the three forms of mismatch, namely, i) vertically mismatched; ii) horizontally

mismatched, and; iii) residual skills mismatched. In order to address the endogeneity of the mismatch variables in the earnings models, the two-stage residual inclusion approach of Terza et al [12].

2.1 Using Mincer-type income equation to analysis mismatch between education and job

The use of the variable labor income associated with a mismatch between employment and fields of study is usually estimated by the Mincer-type income equation in the country of Brazil. The equation used, i.e.

$$\ln(w_i) = \beta_0 + \beta_1 X_i + \beta_2 F_i + \beta_3 M_i + \beta_4 P_i + \beta_5 Dist_i + e_i. \quad (4)$$

where w_i represents hourly labor income, X_i is a vector of demographic characteristics, F_i represents the field of study, M_i is the value of work not related to their field of study (0 or 1), P_i shows those who are partially suitable for employment, and u_i is an error term. [31]

Almost the same as the country of Brazil, in New Zeland the measurement of the mismatch of education and labor market also uses income as a variable. The formula used is also almost the same shape but uses variables

$$\ln(E_i) = \beta_0 + \beta_1 S_i + \beta_2 Exp_i + \beta_2 Exp_i^2 + \beta_3 M_i + \alpha_4 X_i + u_i. \quad (5)$$

E_i represents individual income, S_i is the level of education achieved, Exp_i is post-school labor market experience, X_i is a vector of variables that defines the individual (other than education or experience) and u_i is a random error term. This specification reflects labor market outcomes based on employee information and is therefore entirely dependent on information about educational attainment from the supply side. [32]

Mismatch analysis in the United States also uses income as a benchmark in seeing how large the mismatch is between education and job.

$$\ln w_i = \delta_r S_i^r + \delta_0 S_i^0 + \delta_u S_i^u + x_i' \beta + \varepsilon_i \quad (6)$$

where w_i denotes wages, S_r is the year of education needed for the job, S_0 So the year of excessive education, and S_u the year without education. x_i is a vector of control variables including experience and the square of experience. δ_r , δ_0 , and δ_u are returns for the required education years, excessive years of education, and fewer years of education. [33]

Demographic characteristics are represented by age, age squared, sex, race, and distance between work and residence. Some other countries such as Armenia, Georgia, Macedonia, Ukraine [8] Jepang [16] dan Afrika [34], also use Mincer-type income equality exchanges to analyze the mismatch of education and job.

2.2 Using data mining to analysis mismatch between education and job

Some mismatch analysis at this time has begun to use existing algorithms in data mining. As in Hungary [35], the analysis was carried out by utilizing an integrated database of the National Tax Administration, the National Health Insurance Fund, and higher education information systems. Several clustering methods including the BRIM algorithm [36] (bipartite, recursively induced modules) developed specifically for bipartite graphs, were chosen in analyzing the distribution of over education that is spread across several regions of the Hungarian country.

In the United Kingdom [37], education and work mismatch analysis are carried out using the clustering method in grouping work data at an individual level and looking at trends in overeducation that occur. The algorithm used in classifying is K-Median Clustering [38]. Machine Learning [39] is used in analyzing how graduates are employed in the country of Spain. Predictive models are built using machine learning algorithms. The data they used was taken from the Spanish Observatory for Employability and Employment (OEEU).

3. Method

We propose the K-Means algorithm or the hierarchical clustering algorithm approach in clustering mismatch between education and labor market. K-means is a method for dividing a set of observations into a user-defined number of subsets, based on how close the observations are to each other in the

feature space[38]. There are k the number of subsets. The grouping is divided into five groups namely mismatch by level education, a field of study, job-specific level, level of basic skills and level of portable skills.

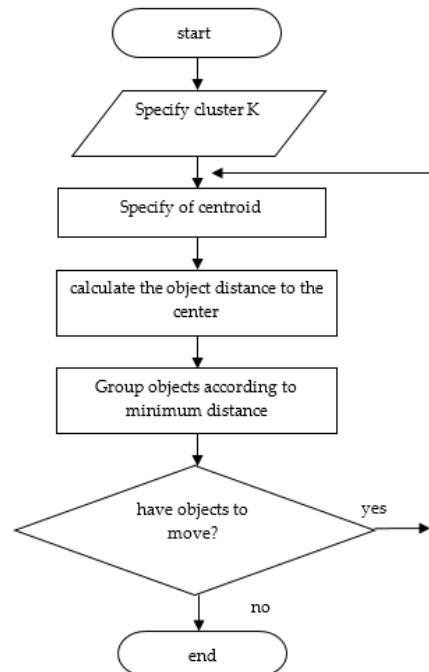


Figure 4. Flowchart of the K-means algorithm

The steps of the K-means algorithm are as follows, 1) Setting the initial midpoint value, 2) Calculating the distance of an object to a centroid using the Euclid distance formula, 3) Clustering an object by entering each object into a cluster (group) based on its minimum distance, 4) determine the centroid, based on the members of each group, 5) calculates the distance of the object to the new centroid until the grouping of each object has a minimum distance.

4. Discussion

Based on the 2016 Asian Development Bank report [7] job mismatches that occur in Indonesia tend to be related to the low level of education of workers who qualify for their jobs. Lack of qualifications is also a challenge in higher-level jobs. The low level of qualifications and the low level of over-qualifications lead to the problem of lack of skills. This is an important issue because high levels of skills and qualification mismatch are usually associated with lower levels of labor productivity.

With the importance of the mismatch problem between education and labor market, an analysis is needed that can measure the extent of the mismatch that occurs in Indonesia. Some methods that have been used to analyze in several countries are the Maximum Likelihood equation, the Mincer-type income equation, and the use of clustering algorithms in data mining.

Analysis of the measurement of education and work world mismatch that has been used in several countries pay attention to criteria related to education such as education level, experience, length of education and demographic factors. Demographic factors are represented by age, age squared, sex, race, and distance between workplace and residence. A mismatch analysis on education and types of work in Indonesia can be done by taking into account Presidential Regulation of the Republic of Indonesia Number 8 of 2012 [41] Concerning the Indonesian National Qualification Framework (KKNI) or based on the Indonesian Classification of Work Standard (KBJI) [42] made by BPS. The Indonesian National Qualification Framework (KKNI). KKNI provides nine qualification levels, starting from the 1st level qualification as the lowest qualification and the 9th level qualification as the highest qualification.

Table 1. Education, KKNi, and Level of Job

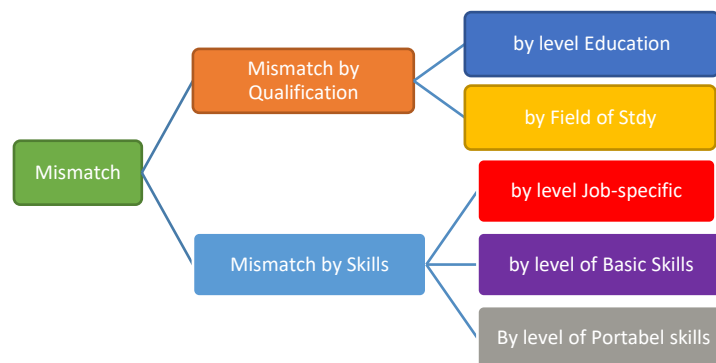
Education	KKNi	Level of Job
Basic Education (SD, SMP)	Level 1	Operator
Middle Education (SMA/MA/SMK)	Level 2	Operator
Diploma I	Level 3	Operator
Diploma II	Level 4	Technician/Analyst
Diploma III	Level 5	Technician/Analyst
Diploma IV/Bachelor	Level 6	Technician/Analyst
Profession	Level 7 or 8	Expert
S2	Level 8	Expert
Specialist	Level 8 or 9	Expert
S3	Level 9	Expert

Source: Presidential Regulation of the Republic of Indonesia Number 8 of 2012

Based on Table 1, it can be seen that there are 9 levels of KKNi according to Presidential Regulation of the Republic of Indonesia Number 8 of 2012. Basic, middle, and Diploma I have 1, 2, and 3 levels of KKNi with occupational positions as operators. Education DII, DIII, DIV / Bachelor have KKNi levels 4, 5, and 6 with a job position as a technician/analyst. As for professional education, S2, specialist, and S3 have KKNi levels 7, 8, and 9 with occupational positions as experts/professionals. The division into these three occupational positions is still considered to be less detailed.

The division of types of work in detail can be based on the Indonesian Classification of Occupational Classification (KBJI) issued by BPS. Based on KBJI 2000_1 there are 8 types of work ranging from professionals to operators and others. The types of work are in the order of types of work from the highest to with the lowest. The combination of KKNi levels with KBJI 2000_1 can be connected between the types of work and the level of education needed.

By observing the Republic of Indonesia's Presidential Regulation No. 8/2012 and the Indonesian Classification of Work (KBJI) Classification, classification can be made for workers in Indonesia. Analysis of mismatch measurements between education and labor market in Indonesia can see clustering using the K-Means algorithm or the hierarchical clustering algorithm. The use of clustering with the algorithm refers to Hungary, the United Kingdom and countries in Europe. Clustering can be done by grouping the types of mismatch that occur in Indonesia, as shown in Figure 4.

**Figure 5.** Clustering on the mismatch between education and labor market

The mismatch is grouped into parts namely mismatch based on qualifications seen based on the type of education and the field of study and based on the skills seen based on specific job level, basic skill level and level of portable skill. The data needed for classification and clustering are: personal data (date of birth, county of address, citizenship, gender)

- occupational data (employment relationship, occupation, gross wage, etc.)
- employer data (county of company headquarters, company size, company activity, etc.)
- educational data (institute, faculty, program where the graduate graduated)
- certification (skill)

5. Conclusion

Almost all countries have problems with the mismatch of education and labor market. In overcoming these problems they need analysis with several methods to measure how big the mismatch of education and labor market that occurs in the country. The method used is the Maximum Likelihood equation, the Mincer-type income equation, and the use of clustering algorithms in data mining.

Indonesia as a developing country is also inseparable from this problem. This mismatch phenomenon is due to the transformation of the labor market in Indonesia. The first transformation occurred in the early 1990s which was marked by changes in the primary sector to the secondary sector in the labor market.

Based on measurements that have been made in several countries, Indonesia can adopt a method of measuring the mismatch between education and labour market. The use of the K-Means algorithm or the hierarchical clustering algorithm will be able to see how much mismatch is occurring in Indonesia. Clustering is carried out referring to the Republic of Indonesia's Presidential Regulation No. 8/2012 and the Indonesian Classification of Work (KBJI).

References

- [1] Montenegrin Employers Federation (MEF) and Prof Dr Milivoje Radovic and Dr Jovan Djuraskovic, "Report: Mismatch between Education System and Labour Market Needs – Enabling Environment for Sustainable, Enterprises in Montenegro", Montenegrin Employers Federation (MEF), Podgorica, May 2016.
- [2] C. Manning, "Labour Market Adjustment to Indonesia's Economic Crisis: Context, Trends and Implications," *Bull. Indones. Econ. Stud.*, vol. 36, no. 1, pp. 105–136, Apr. 2000.
- [3] H. Hill, B. Resosudarmo, and Y. Vidyattama, "Indonesia's Changing Economic Geography," Department of Economics, Padjadjaran University, Working Papers in Economics and Development Studies (WoPEDS) 200713, Nov. 2007.
- [4] Miyamoto, Michiko, "Laporan Ketenagakerjaan Indonesia 2017", International Labour Organization, 2017 .
- [5] "Summary Report." [Online]. Available: https://www.ilo.org/ilostat/faces/oracle/webcenter/portalapp/pagehierarchy/Page3.jspx?MBI_ID=7&_afzLoop=135560966713369&_afzWindowMode=0&_afzWindowId=qz5pmvxii_1#!%40%40%3F_afzWindowId%3Dqz5pmvxii_1%26_afzLoop%3D135560966713369%26_MBI_ID%3D7%26_afzWindowMode%3D0%26_adf.ctrl-state%3Dqz5pmvxii_129. [Accessed: 18-Jul-2019].
- [6] "Ketidaksesuaian antara Pendidikan dan Kebutuhan Tenaga Kerja Masih Besar | Databoks." [Online]. Available: <https://databoks.katadata.co.id/datapublish/2019/05/28/ketidaksesuaian-antara-pendidikan-dan-kebutuhan-tenaga-kerja-masih-besar>. [Accessed: 18-Jul-2019].
- [7] E. R. Allen, "Analysis of Trends and Challenges in the Indonesian Labor Market," Asian Development Bank, 2016 p. 38.
- [8] O. Kupets, "Education in transition and job mismatch: Evidence from the skills survey in non-EU transition economies," Departement of Economic, National University of "Kyiv-Mohyla Academy", p. 57, February 2015
- [9] __, "Indonesia Skills Report Trends in Skills Demand, Gaps, and Supply in Indonesia", Human Development Department East Asia and Pacific Region, 2010 .
- [10] Senarath, Patabendige, "Job-Education Mismatch Among the Graduates: A Sri Lankan Perspective," *Ruhuna Journal of Management and Finance*, ISSN 2235-9222, Volume 1 Number 2 - July 2014].
- [11] Cedefop, "Annual report 2010", Publications Office of the European Union, ISBN Publications Office of the European Union, 2011 .
- [12] I. W. Li, M. Harris, and P. J. Sloane, "Vertical, Horizontal and Residual Skills Mismatch in the Australian Graduate Labour Market," *Econ. Rec.*, vol. 94, no. 306, pp. 301–315, 2018.
- [13] P. Pholphirul, "Educational mismatches and labor market outcomes: Evidence from both vertical and horizontal mismatches in Thailand," *Educ. Train.*, vol. 59, no. 5, pp. 534–546, Jun. 2017.
- [14] R. Iryanti, "Education & Skill Mismatch di Indonesia:," Paparan, Agustus 2017, p. 28.

- [15] J. Schweri, A. Eymann, and M. Aepli, “Horizontal Mismatch and Vocational Education,” , Universitas Zurich, Februari 2019, p. 29.
- [16] S. Flisi, V. Goglio, E. C. Meroni, M. Rodrigues, and E. Vera-Toscano, “Measuring Occupational Mismatch: Overeducation and Overskill in Europe—Evidence from PIAAC,” *Soc. Indic. Res.*, vol. 131, no. 3, pp. 1211–1249, Apr. 2017.
- [17] D. Erdsiek, “Overqualification of graduates: assessing the role of family background,” *J. Labour Mark. Res.*, vol. 49, no. 3, pp. 253–268, Nov. 2016.
- [18] S. LaRochelle-Côté and D. Hango, “Overqualification, skills and job satisfaction,” the Minister responsible for Statistics Canada , p. 16, 2016.
- [19] V. Meliciani and V. Romania, “Overeducation and overskill in the Italian labour market: the role of fields of study,” CIMR Research Working Paper Series, p. 32. 2016
- [20] T. Sparreboom and A. Tarvid, “Imbalanced Job Polarization and Skills Mismatch in Europe,” *J. Labour Mark. Res.*, vol. 49, no. 1, pp. 15–42, Jul. 2016.
- [21] D. Rohrbach-Schmidt and M. Tiemann, “Educational (Mis)match and skill utilization in Germany: Assessing the role of worker and job characteristics,” *J. Labour Mark. Res.*, vol. 49, no. 2, pp. 99–119, Oct. 2016.
- [22] Adrian Nikolov; Desislava Nikolova, PhD; and Peter Ganey; Yavor Aleksiev, “Research to understand the extent, nature and impact of skills mismatches in the economy,” *Inst. Mark. Econ. Eur. Econ. Soc. Comm. EESC*, p. 106, Jul. 2018.
- [23] K. Mavromaras, S. McGuinness, S. Richardson, P. Sloane, and Z. Wei, “Over-skilling and job satisfaction,” IZA Discussion Paper No. 5083, p. 58. July 2010
- [24] A. Chłoń-Domińczak and A. Żurawski, “Measuring Skills Mismatches Revisited - Introducing Sectoral Approach,” p. 46.
- [25] Y. E. Pravitasmara Dewi and L. Suharti, “Understanding Skill Mismatch from Learning Organization Perspective: A Literature Review,” *KnE Soc. Sci.*, vol. 3, no. 10, Nov. 2018.
- [26] B. Manuela and M. Simona, “Social Integration Dynamics for Migrants: PIAAC to Measure Skill and Qualification Mismatch,” *Univers. J. Educ. Res.*, vol. 6, no. 5, pp. 970–982, May 2018.
- [27] T. Karmel, “Skills Deepening or Credentialism? Education Qualifications and Occupational Outcomes, 1996-201,” vol. 18, no. 1, p. 23, 2015.
- [28] A. Marin and S. Hayes, “The Occupational Context of Mismatch: Measuring the Link Between Occupations and Areas of Study to Better Understand Job- Worker Match,” *Canadian Journal of Sociology*, p. 22. 2017
- [29] A. Di Paolo, A. Matas, and J. L. Raymond, “Job Accessibility, Employment and Job-Education Mismatch in the Metropolitan Area of Barcelona,” *SSRN Electron. J.*, 2014.
- [30] S. J. Cabus and M. A. Somers, “Mismatch between education and the labour market in the Netherlands: is it a reality or a myth? The employers’ perspective,” *Stud. High. Educ.*, vol. 43, no. 11, pp. 1854–1867, Nov. 2018.
- [31] M. Reis, “Measuring the mismatch between field of study and occupation using a task-based approach,” *J. Labour Mark. Res.*, vol. 52, no. 1, 2018.
- [32] J. Z. Yeo and S. A. Maani, “Educational Mismatches and Earnings in the New Zealand Labor Market,” p. 31.
- [33] E. Leuven and H. Oosterbeek, “Overeducation and Mismatch in the Labor Market,” in *Handbook of the Economics of Education*, vol. 4, Elsevier, 2011, pp. 283–326.
- [34] E. Grapsa, “How well matched are South African workers to their jobs?,” p. 44.
- [35] “Graph configuration model based evaluation of the education-occupation match.” [Online]. Available: <https://www.ncbi.nlm.nih.gov/pmc/articles/PMC5839539/>. [Accessed: 09-Aug-2019].
- [36] R. Tackx, F. Tarissan, and J.-L. Guillaume, “ComSim: A Bipartite Community Detection Algorithm Using Cycle and Node’s Similarity,” in *Complex Networks & Their Applications VI*, vol. 689, C. Cherifi, H. Cherifi, M. Karsai, and M. Musolesi, Eds. Cham: Springer International Publishing, 2018, pp. 278–289.
- [37] “The changing graduate labour market: analysis using a new indicator of graduate jobs | SpringerLink.” [Online]. Available: <https://link.springer.com/article/10.1186/s40173-016-0070-0>. [Accessed: 09-Aug-2019].
- [38] D. Dohan, S. Karp, and B. Matejek, “K-median Algorithms: Theory in Practice,” p. 21.

- [39] S. Shalev-Shwartz and S. Ben-David, *Understanding Machine Learning: From Theory to Algorithms*. Cambridge: Cambridge University Press, 2014.
- [40] “Analysis of the UK labour market - estimates of skills mismatch using measures of over and under education - Office for National Statistics.” [Online]. Available: <https://www.ons.gov.uk/employmentandlabourmarket/peopleinwork/employmentandemployeetypes/articles/analysisoftheuklabourmarketestimatesofskillsmismatchusingmeasuresofoverandundereducation/2015>. [Accessed: 30-Jul-2019].
- [41] Peraturan Presiden Republik Indonesia Nomor 8 Tahun 2012 Tentang Kerangka Kualifikasi Nasional Indonesia
- [42] Klasifikasi Baku Jabatan Indonesia KBJI 2014, Kementrian Ketenagakerjaan dan Badan Pusat Statistik